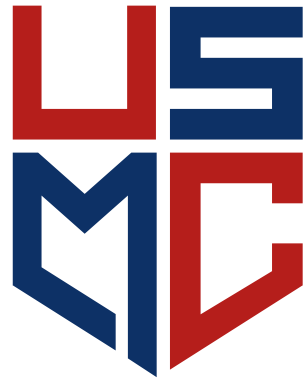


Program Offerings



Underwriting Service Management Co

DEMETER
SPECIALTY RISK LLC

PIPF



LS
ME

Table of Contents

| | | | |
|--|---------|---|---------|
| Table of Contents | Page 1 | Structural Steel | Page 13 |
| About USMC | Page 2 | Non-Structural Ornamental Metal | Page 14 |
| Appetite Guide - HNOA | Page 3 | Rebar Installation Contractors | Page 15 |
| Hired & Non-Owned Auto Liability | Page 4 | Janitorial Contractors | Page 16 |
| Appetite Guide - Products/CGL/MGL | Page 5 | Landscaping Contractors | Page 17 |
| Fire Suppression | Page 6 | Window, Door, and Glass Installation | Page 18 |
| HVAC Contractors | Page 7 | Consultants | Page 19 |
| Electrical Contractors | Page 8 | Flooring Installers | Page 20 |
| Commercial Plumbing | Page 9 | Debris Removal | Page 21 |
| Waste Haulers & Roll Off Container Services | Page 10 | Demeter Specialty Risk | Page 22 |
| Truckers and Movers | Page 11 | PIPF | Page 23 |
| Drywall & Related Interior Trade | Page 12 | Notes | Page 24 |



About USMC

USMC (Underwriting Services Management Co.) is a Managing General Agent (MGA) founded in 2010 and based in Harleysville, PA. From the beginning, USMC has focused exclusively on the Excess and Surplus (E&S) lines market, offering tailored solutions in General Liability, Hired Non-Owned Auto (HNOA), and supported Excess coverage for highly specialized niche industries.

What sets us apart is our dedicated in-house underwriting team, known for their deep program expertise and commitment to excellence. We invest heavily in the rigorous training and development of our underwriters, enabling faster turnaround times, competitive pricing, and a highly personalized service experience. This dedication also allows us to cultivate meaningful, lasting relationships with our wholesale broker partners—relationships we consider vital to our shared success.

At USMC, we are passionate about delivering innovative and effective solutions while fostering partnerships built on trust and collaboration. We look forward to working with you!



Hired & Non-Owned Auto Liability

| | |
|-----------------------------------|--|
| <p>Target Risks</p> | <p>Cannabis Delivery and Dispensary, Sales Representatives, In Home Health Aids, Property Management, Non-Emergency Medical Transport, Courier / Finale Mile Services, Messenger Services, Dispatchers and Transportation Brokers, Contractors, Companies required to carry HNOA by Contract, Subcontracted Trucking/ Hauling, Luxury Transportation, Staffing</p> |
| <p>Ineligible Risks</p> | <p>Rideshare (Uber/Lyft), Food Delivery, Valet, & Fuel/ Bio-Waste Haulers</p> |
| <p>Submission Criteria</p> | <p>Acord 125, Supplemental (Must be at USMC's Binding), Loss Runs (a large loss summary for ANY claim over \$25,000), MVR's for all drivers to be pulled annually, All drivers must carry USMC's CSL Requirements</p> |
| <p>Limit Information</p> | <p>1M Per Occurrence / 1 Million Excess Available through Demeter</p> |



Hired and Non-Owned Auto Liability

Did you know that USMC can write these lines of Hired-Non Owned Auto?



Cannabis Delivery



Sales Representatives



In Home Health Aids



Property Management

✓ Typical Risks

MP \$2,500

- Sales Representatives
- Property Management
- In Home Health Aids
- Courier/Finale Mile Services
- Messenger Services
- Luxury Transportation
- Dispatchers and Transportation Brokers
- Cannabis delivery and Dispensary
- Non-Emergency Medical Transport
- Subcontracted Trucking/Hauling
- Staffing Companies (Named Driver Policy Only)

⚠ Limits

- \$1 Million per Occurrence
- \$1 Million Excess Coverage Available

📄 Required for Submissions

- Acord 125 (126 also helpful but not required)
- Supplemental (Must be at USMC's Binding)
- Loss Runs (a large loss summary for ANY claim over \$25,000)
- MVR's for all drivers to be pulled annually
- All drivers must carry USMC's CSL Requirements below:
 - Gross vehicle weight of 10,001 to 20,000 must carry **\$500,000 combined single limit or higher**
 - Gross vehicle weight of 20,001 to 45,000 must carry **\$500,000 combined single limit or higher**
 - Gross vehicle weight over 45,000 must carry **\$1,000,000 combined single limit**

HNOA Team

Shannon Bucci

Sr. Underwriter

(267) 744-4194

sbucci@usmcins.com

Jessica Dolan

HNO Submissions Coordinator

(215) 647-9600

hnoasubmissions@usmcins.com



Products

Commercial General Liability

Available in all 50 States – 1M/2M/2M & 2M/4M/4M Limits – Minimum Premium starting at \$5,000

CGL/MGL

Target Risks

Janitorial Services, Landscape Services, Fire Suppression, Flooring Installers, Window Installers, Sanitation/Waste Haulers, Ornamental Metal Works, Moving/Trucking Operations, Electric, HVAC, Artisan Contractors, Drywall, Finish Carpentry, Rebar, Light Structured Steel, Consultants, Commercial Plumbing.

Ineligible Risks

Roofing Contractors, Snow Removal Operations, and Structural Demolition and Demolition Contractors.

Submission Criteria

Acord Applications, Supplemental Application, 3-5 Year Loss History, Annual Sales & Resume for New Ventures and accounts with less than 3 years loss history.

Limit Information

1M/2M/2M LIMITS
2M/4M/4M LIMITS

Demeter Excess Info

Supported 5x1 over 1/2/2 Limits
Supported 3x2 over 2/4/4 Limits

Fire Suppression Coverage

USMC offers general liability coverage for fire suppression contractors. **Now Offering 2/4/4 limits!**

Eligible Exposures



Wet/Dry Automatic Sprinklers



Foam & Chemical Systems



Fire Alarm Installation & Repair



Hood & Duct Cleaning



Servicing/Refilling Portable Extinguishers

✓ Coverage Offered

- General liability coverage for fire suppression contractors
- Available in all states across the USA (except Alaska)
- Waiver of Transfer of Rights of recovery against other to us
- Primary and Noncontributory Language
- Various Additional Insured endorsements

✗ Ineligible Exposures

- Marine/Aviation
- Fireproofing

⚠ Limits

- 1/2/2 limits (1M occurrence, 2M general aggregate, 2M products and completed operations aggregate)
- 2/4/4 limits (2M occurrence, 4M general aggregate, 4M products and completed operations aggregate)
- 5M Per Project Aggregate
- 5M supported excess over 1/2/2 and 3M excess over 2/4/4

📄 Required for Submissions

- Completed Acord 125 & 126 application
- Completed Supplemental application
- 5 year loss history (Resume is required if in business for 3 years or less)
- Insured **MUST** have their Master Fire Suppression and Piping Contractor's License (NY contractors only)

Fire Suppression Coverage Team

T.J. Yaglenski
Sr. Underwriter
(215) 392-0751
tj@usmcins.com

Andrew Dolan
Vice President of Underwriting
(267) 744-4112
andrew@usmcins.com

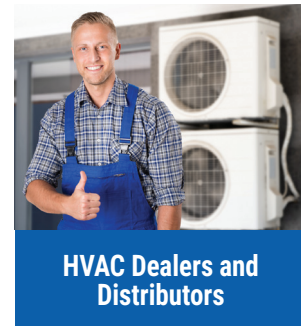
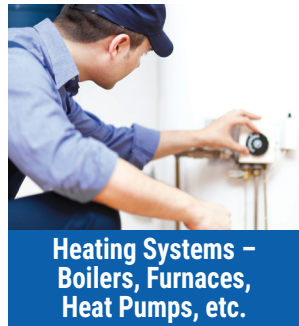
Matt Kerr
Underwriter
(445) 234-3171
mkerr@usmcins.com

Laura Kolb
GL Submissions Coordinator
(215) 647-9600
glsubmissions@usmcins.com

HVAC Contractors Coverage

USMC offers General liability coverage for HVAC contractors. **Now Offering 2/4/4 limits!**

Eligible Exposures



✔ Coverage Offered

- General liability coverage for HVAC contractors
- Available in all states across the USA (except Alaska)
- Waiver of Transfer of Rights of recovery against other to us
- Primary and Noncontributory Language
- Various Additional Insured endorsements
- No Residential Limitation

✘ Ineligible Exposures

- Pitched Roof

⚠ Limits

- 1/2/2 limits (1M occurrence, 2M general aggregate, 2M products and completed operations aggregate)
- 2/4/4 limits (2M occurrence, 4M general aggregate, 4M products and completed operations aggregate)
- 5M Per Project Aggregate
- 5M supported excess over 1/2/2 and 3M excess over 2/4/4

📄 Required for Submissions

- Completed Acord 125 & 126 application
- Completed Supplemental application
- 5 year loss history (Resume is required if in business for 3 years or less)

HVAC Coverage Team

TJ Yaglenski

Senior Underwriter
(215) 392-0751
tj@usmcins.com

Laura Kolb

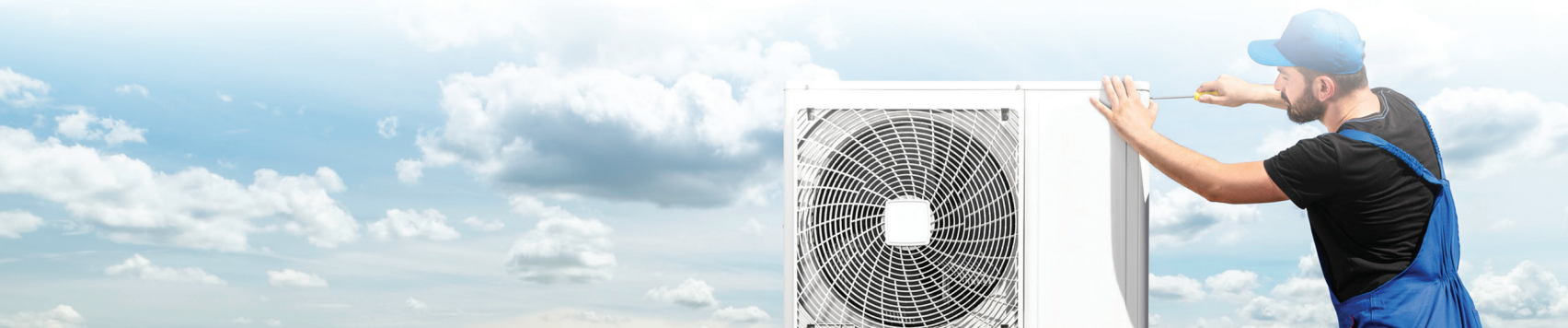
Submission Team Lead
(215) 647-9600
laura@usmcins.com

Matt Kerr

Underwriter
(445) 234-3171
mkerr@usmcins.com

Mike Howard

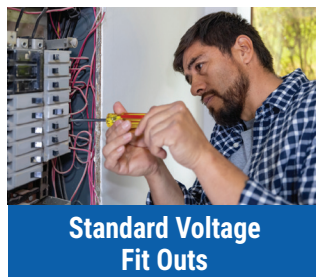
Underwriter - GL
(484) 801-4972
mhoward@usmcins.com



Electrical Contractors Coverage

USMC offers General liability coverage for electrical contractors. **Now Offering 2/4/4 limits!**

Eligible Exposures



✓ Coverage Offered

- General liability coverage for electrical contractors
- Available in all states across the USA (except Alaska)
- Waiver of Transfer of Rights of recovery against other to us
- Primary and Noncontributory Language
- Various Additional Insured endorsements

✗ Ineligible Exposures

- High Voltage
- Telephone Pole Servicing

⚠ Limits

- 1/2/2 limits (1M occurrence, 2M general aggregate, 2M products and completed operations aggregate)
- 2/4/4 limits (2M occurrence, 4M general aggregate, 4M products and completed operations aggregate)
- 5M Per Project Aggregate
- 5M supported excess over 1/2/2 and 3M excess over 2/4/4

📄 Required for Submissions

- Completed Acord 125 & 126 application
- Completed Supplemental application
- 5 year loss history (Resume is required if in business for 3 years or less)
- Confirmation of Maximum Voltage Level

Electrical Coverage Team

TJ Yaglenski

Senior Underwriter
(215) 392-0751
tj@usmcins.com

Laura Kolb

Submission Team Lead
(215) 647-9600
laura@usmcins.com

Matt Kerr

Underwriter
(445) 234-3171
mkerr@usmcins.com

Mike Howard

Underwriter - GL
(484) 801-4972
mhoward@usmcins.com

Commercial & Residential Plumbing Coverage

USMC offers General Liability coverage for plumbers.

Eligible Exposures



**New Ventures
(in most cases)**



Up to 30% residential exposure
(does not include apartments
or custom single family homes)



**Work in NY state
including the 5 Boroughs**

✔ Coverage Offered

- General liability coverage for plumbers
- Available in all states in the USA (except for Alaska)
- Action Over coverage
- Waiver of transfer of rights of recovery against others to us
- Primary and noncontributory language
- Various additional insured endorsements

✘ Ineligible Exposures

- Track Home Exposure
- 100% sewer or water main work

⚠ Limits

- 1/2/2 limits (1M occurrence, 2M general aggregate, 2M products and completed operations aggregate)
- 5M Per Project Aggregate
- 5M supported excess over 1/2/2 and 3M excess over 2/4/4
- \$10K third party /\$25K action over (NY only) SIR

📄 Required for Submissions

- Completed Acord 125 & 126 Application
- Completed Supplemental Application
- 5-year loss history
(Resume is required if in business for 3 years or less)
- Subcontractors agreement

Commercial & Residential Plumbing Coverage Team

Matt Kerr

Underwriter
(445) 234-3171
mkerr@usmcins.com

TJ Yaglenski

Senior Underwriter
(215) 392-0751
tj@usmcins.com

Laura Kolb

GL Submissions Coordinator
(215) 647-9600
glsubmissions@usmcins.com

Waste Haulers & Roll Off Container Services Coverage

USMC offers coverage for Waste Haulers & Roll Off Container Service Companies. **Now Offering 2/4/4 limits!**

Eligible Exposures



Roll Off Containers



General Waste Hauling

✓ Coverage Offered

- General liability coverage for waste haulers
- General liability coverage for roll off container service companies
- Waiver of transfer of rights of recovery against others to us
- Primary noncontributory language
- Various additional insured endorsements

✗ Ineligible Exposures

- Physical demolition exposure
- Hazardous material hauling/ disposal
- Owning or operating transfer station or landfill
- Labor services for construction or demolition debris removal

⚠ Limits

- 1/2/2 limits (1M occurrence, 2M general aggregate, 2M products and completed operations aggregate)
- 2/4/4 limits (2M occurrence, 4M general aggregate, 4M products and completed operations aggregate)
- 5M Per Project Aggregate
- 5M supported excess over 1/2/2 and 3M excess over 2/4/4

📄 Required for Submissions

- Completed Acord 125 & 126 application
- Completed Supplemental application
- 5 year loss history (Resume is required if in business for 3 years or less)

Waste Haulers & Roll Off Container Services Coverage Team

Drew Moyer

Underwriter – GL
 (484) 801-4794
 dmoyer@usmcins.com

Laura Kolb

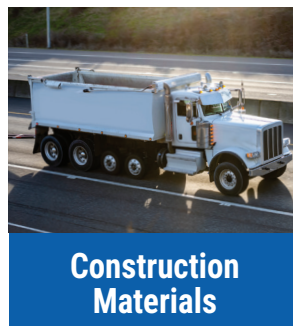
GL Submissions Coordinator
 (215) 647-9600
 glsubmissions@usmcins.com



Truckers & Movers Coverage

USMC offers coverage for Trucking and Moving companies. **Now Offering 2/4/4 limits!**

Eligible Exposures



✓ Coverage Offered

- General liability coverage for Trucking companies
- General liability coverage for Moving companies
- Waiver of transfer of rights of recovery against others to us
- Primary noncontributory language
- Various additional insured endorsements

✗ Ineligible Exposures

- Hazardous material hauling / disposal
- Labor only (loading and unloading labor for movers)

⚠ Limits

- 1/2/2 limits (1M occurrence, 2M general aggregate, 2M products and completed operations aggregate)
- 2/4/4 limits (2M occurrence, 4M general aggregate, 4M products and completed operations aggregate)
- 5M Per Project Aggregate
- 5M supported excess over 1/2/2 and 3M excess over 2/4/4

📄 Required for Submissions

- Completed Acord 125 & 126 application
- Completed Supplemental application
- 5 year loss history (Resume is required if in business for 3 years or less)
- If movers have a warehousing operation than we must receive a copy of their Warehouse legal liability coverage

Truckers & Movers Coverage Team

Drew Moyer

Underwriter – GL
 (484) 801-4794
 dmoyer@usmcins.com

Laura Kolb

GL Submissions Coordinator
 (215) 647-9600
 glsubmissions@usmcins.com



Drywall & Related Interior Trade Coverage

USMC offers coverage for drywall & related interior trade contractors. **Now Offering 2/4/4 limits!**

Eligible Exposures



Commercial Buildings
Offices, Schools, Retail Stores,
Grocery Stores, etc.



Residential Buildings
Private Residences, Apartments,
Co-ops and Condos



**Union & Non-Union
Trade/Subcontractors**

Union & Non-Union Trade/Subcontractors includes: Drywall or Wallboard hanging, Interior Carpentry – including non-structural framing, cabinets, and other finish carpentry, Interior Painting, Taping, Lathing and associated work

✓ Coverage Offered

- General liability coverage for drywall & related interior trade contractors
- Available in all States across the USA (Except Alaska)
- Waiver of transfer or rights of recovery against others to us
- Primary and Non-contributory Language
- Various additional insured endorsements

✗ Ineligible Exposures

- Structural alterations
- Exterior or ground up framing
- Fire/Water/Mold Remediation work
- Interior or exterior demolition

⚠ Limits

- 1/2/2 limits (1M occurrence, 2M general aggregate, 2M products and completed operations aggregate)
- 2/4/4 limits (2M occurrence, 4M general aggregate, 4M products and completed operations aggregate)
- 5M Per Project Aggregate
- 5M supported excess over 1/2/2 and 3M excess over 2/4/4

📄 Required for Submissions

- Completed Acord 125 & 126 application
- Completed Supplemental
- Five years of loss history (Resume is required if in business for three years or less)
- Safety manual
- Expiring program info – Limits, Premiums, DED/SIR, Etc.
- Subcontractors' agreement
- Workers comp mod

Drywall & Related Interior Trade Coverage Team

Andrew Dolan

Vice President of Underwriting
(215) 647-9600
andrew@usmcins.com

Andrew Curry

Underwriter – GL
(267) 454-0056
acurry@usmcins.com

Laura Kolb

GL Submissions Coordinator
(215) 647-9600
glsubmissions@usmcins.com

Structural Steel Coverage

USMC offers General Liability coverage for structural steel contractors. **Now Offering 2/4/4 limits!**

Eligible Exposures



New Ventures



4 Stories max exterior height



Work in NY state including the 5 Boroughs

✔ Coverage Offered

- General liability coverage for structural steel contractors
- Available in all states in the USA (except for Alaska)
- Action Over coverage
- Waiver of transfer of rights of recovery against others to us
- Primary and noncontributory language
- Various additional insured endorsements

✘ Ineligible Exposures

- Super Structure work
- Work exceeding 4 stories

⚠ Limits

- 1/2/2 limits (1M occurrence, 2M general aggregate, 2M products and completed operations aggregate)
- 2/4/4 limits (2M occurrence, 4M general aggregate, 4M products and completed operations aggregate)
- 5M Per Project Aggregate
- 5M supported excess over 1/2/2 and 3M excess over 2/4/4
- \$10K third party /\$25K action over (NY only) SIR

📄 Required for Submissions

- Completed Acord 125 & 126 Application
- Completed Supplemental Application
- 5-year loss history (Resume is required if in business for 3 years or less)
- Subcontractors agreement

Structural Steel Coverage Team

Andrew Dolan

Vice President of Underwriting
(215) 647-9600
andrew@usmcins.com

Drew Moyer

Underwriter – GL
(484) 801-4794
dmoyer@usmcins.com

Laura Kolb

GL Submissions Coordinator
(215) 647-9600
glsubmissions@usmcins.com



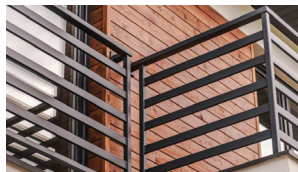
Non-Structural Ornamental Metal Coverage

USMC offers coverage for Non-Structural/Ornamental Metal Contractors. **Now Offering 2/4/4 limits!**

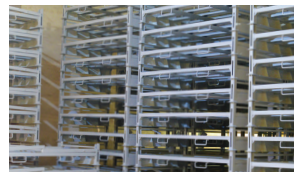
Eligible Exposures



Stairs



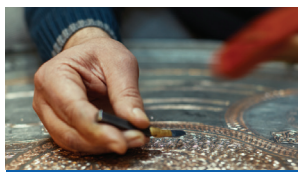
Railings



Dunnage



Bollards



Decorative/
Artistic Metal



Gates



Fences



Canopies

✓ Coverage Offered

- General Liability Coverage for Non-Structural/Ornamental Metal Contractors
- Available in all States across the USA (Except Alaska)
- Waiver of transfer or rights of recovery against others to us
- Primary and Non-contributory Language
- Various additional insured endorsements

✗ Ineligible Exposures

- Structural Metal such as steel beam column
- Fire Escapes
- Elevator Shafts
- Exterior height work above two stories other than on flat top roofs, terraces and balconies

⚠ Limits

- 1/2/2 limits (1M occurrence, 2M general aggregate, 2M products and completed operations aggregate)
- 2/4/4 limits (2M occurrence, 4M general aggregate, 4M products and completed operations aggregate)
- 5M Per Project Aggregate
- 5M supported excess over 1/2/2 and 3M excess over 2/4/4

📄 Required for Submissions

- Completed Acord 125 & 126 application
- Completed Supplemental application
- 5 year loss history (Resume is required if in business for 3 years or less)
- Safety manual
- Subcontractors' agreement
- Workers comp mod

Non-Structural/Ornamental Metal Contractors Coverage Team

Ren DeRosier

Underwriter
(267) 744-2124
cderosier@usmcins.com

Drew Moyer

Underwriter – GL
(484) 801-4794
dmoyer@usmcins.com

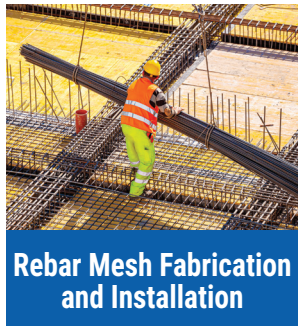
Laura Kolb

GL Submissions Coordinator
(215) 647-9600
glsubmissions@usmcins.com

Rebar Installation Contractors Coverage

USMC offers General liability coverage for rebar installation contractors. **Now Offering 2/4/4 limits!**

Eligible Exposures



✔ Coverage Offered

- General liability coverage for rebar installation contractors
- Available in all states in the USA (except for Alaska)
- Action Over coverage
- Waiver of transfer of rights of recovery against others to us
- Primary and noncontributory language
- Various additional insured endorsements

✘ Ineligible Exposures

- Super Structure work

⚠ Limits

- 1/2/2 limits (1M occurrence, 2M general aggregate, 2M products and completed operations aggregate)
- 2/4/4 limits (2M occurrence, 4M general aggregate, 4M products and completed operations aggregate)
- 5M Per Project Aggregate
- 5M supported excess over 1/2/2 and 3M excess over 2/4/4
- \$10K third party /\$25K action over (NY only) SIR

📄 Required for Submissions

- Completed Acord 125 & 126 application
- Completed Supplemental application
- 5 year loss history (Resume is required if in business for 3 years or less)

Rebar Installation Coverage Team

Drew Moyer

Underwriter – GL
 (484) 801-4794
 dmoyer@usmcins.com

Laura Kolb

GL Submissions Coordinator
 (215) 647-9600
 glsubmissions@usmcins.com



Janitorial Contractors Coverage

USMC offers coverage for Janitorial Contractors in all states (Except Alaska). **Now Offering 2/4/4 limits!**

Eligible Exposures



Commercial Buildings

Offices, Schools, Retail Stores, Grocery Stores, Hotels/Hospitality Buildings

Types of Janitorial Duties: dusting, sweeping, mopping (after hours preferred), floor waxing & stripping (after hours preferred), interior window washing, post construction clean-up (at a higher rate due to more risk exposure), commercial kitchens, ducts, carpet cleaning, power washing



Residential Buildings

Private Residences, Apartments, Co-ops and Condos

✔ Coverage Offered

- General Liability coverage for Janitorial Contractors
- Available in all States across the USA (Except Alaska)
- Waiver of transfer or rights of recovery against others to us
- Primary and Non-contributory Language
- Various additional insured endorsements

✘ Ineligible Exposures

- Transfer Stations
- Exterior window washing above ground level
- Fire/Water/Mold Remediation work
- Snow removal

⚠ Limits

- 1/2/2 limits (1M occurrence, 2M general aggregate, 2M products and completed operations aggregate)
- 2/4/4 limits (2M occurrence, 4M general aggregate, 4M products and completed operations aggregate)
- 5M Per Project Aggregate
- 5M supported excess over 1/2/2 and 3M excess over 2/4/4

📄 Required for Submissions

- Completed Acord 125 & 126 application
- Completed Supplemental application
- 5 year loss history (Resume is required if in business for 3 years or less)
- Safety manual
- Subcontractors' agreement
- Workers comp mod

Janitorial Contractors Coverage Team

Ren DeRosier

Underwriter
(267) 744-2124
cderosier@usmcins.com

Drew Moyer

Underwriter – GL
(484) 801-4794
dmoyer@usmcins.com

Laura Kolb

GL Submissions Coordinator
(215) 647-9600
glsubmissions@usmcins.com

Landscaping Contractors Coverage

USMC offers General Liability Coverage for Landscaping Contractors. **Now Offering 2/4/4 limits!**

Eligible Exposures



Roof Top or Terrace Gardens



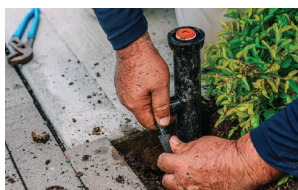
Hardscape



Minor Carpentry Work



Excavation



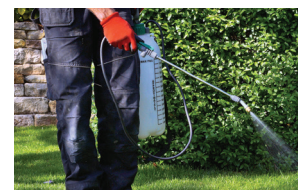
Garden Sprinklers/ Irrigation Systems



Mulching



Weeding



Spraying Typical Herbicides/Pesticides

Other Exposures: Cutting of Grass, Fences, Minor Patio Work, Planting of Seeds, Weed Whacking

✓ Coverage Offered

- General Liability Coverage for Landscaping Contractors
- Available in all States across the USA (Except Alaska)
- Waiver of transfer or rights of recovery against others to us
- Primary and Non-contributory Language
- Various additional insured endorsements

✗ Ineligible Exposures

- Tree removal
- Exterior height work above two stories other than roof top gardens, balconies and terraces
- Crane work without full risk transfer
- Snow Removal

⚠ Limits

- 1/2/2 limits (1M occurrence, 2M general aggregate, 2M products and completed operations aggregate)
- 2/4/4 limits (2M occurrence, 4M general aggregate, 4M products and completed operations aggregate)
- 5M Per Project Aggregate
- 5M supported excess over 1/2/2 and 3M excess over 2/4/4

📄 Required for Submissions

- Completed Acord 125 & 126 application
- Completed Supplemental application
- 5 year loss history (Resume is required if in business for 3 years or less)
- Safety manual
- Subcontractors' agreement
- Workers comp mod

Landscaping Contractors Coverage Team

Ren DeRosier

Underwriter
(267) 744-2124
cdrosier@usmcins.com

Drew Moyer

Underwriter – GL
(484) 801-4794
dmoyer@usmcins.com

Laura Kolb

GL Submissions Coordinator
(215) 647-9600
glsubmissions@usmcins.com

Window, Door, and Glass Installation Coverage

USMC offers coverage for window, door, and glass installation contractors. **Now Offering 2/4/4 limits!**

Eligible Exposures



New Ventures



Exterior Height Work up to 2 Stories



Work on Flat Top Roofs and Balconies



Curtain Walls/ Window Walls



Rolling/ Automatic Doors



Skylight Installation



Residential Installation



Commercial Installation

✓ Coverage Offered

- General liability coverage for window, door, and glass installation contractors
- Available in all states in the USA (except for Alaska)
- Action Over coverage
- Waiver of transfer of rights of recovery against others to us
- Primary and noncontributory language
- Various additional insured endorsements

✗ Ineligible Exposures

- Exterior height work exceeding 2 stories
- Tract homes

⚠ Limits

- 1/2/2 limits (1M occurrence, 2M general aggregate, 2M products and completed operations aggregate)
- 2/4/4 limits (2M occurrence, 4M general aggregate, 4M products and completed operations aggregate)
- 5M Per Project Aggregate
- 5M supported excess over 1/2/2 and 3M excess over 2/4/4
- \$10K third party /\$25K action over (NY only) SIR

📄 Required for Submissions

- Completed Acord 125 & 126 application
- Completed Supplemental application
- 5 year loss history (Resume is required if in business for 3 years or less)

Window, Door, and Glass Installation Coverage Team

Drew Moyer

Underwriter – GL
 (484) 801-4794
 dmoyer@usmcins.com

Laura Kolb

GL Submissions Coordinator
 (215) 647-9600
 glsubmissions@usmcins.com



Consultants Coverage

USMC offers General Liability Coverage for Consultants. **Now Offering 2/4/4 limits!**

Eligible Exposures



✔ Coverage Offered

- General Liability Coverage for Consultants
- Available in all States across the USA (Except Alaska)
- Waiver of transfer or rights of recovery against others to us
- Primary and Non-contributory Language
- Various additional insured endorsements

✘ Ineligible Exposures

- Construction managers
- Project managers

⚠ Limits

- 1/2/2 limits (1M occurrence, 2M general aggregate, 2M products and completed operations aggregate)
- 2/4/4 limits (2M occurrence, 4M general aggregate, 4M products and completed operations aggregate)
- 5M Per Project Aggregate
- 5M supported excess over 1/2/2 and 3M excess over 2/4/4

📄 Required for Submissions

- Completed Acord 125 & 126 application
- Completed Supplemental application
- 5 year loss history (Resume is required if in business for 3 years or less)
- Safety manual
- Subcontractors' agreement
- Workers comp mod
- Proof of Professional Liability Coverage at Binding

Consultants Coverage Team

Ren DeRosier

Underwriter
(267) 744-2124
cderosier@usmcins.com

Drew Moyer

Underwriter – GL
(484) 801-4794
dmoyer@usmcins.com

Laura Kolb

GL Submissions Coordinator
(215) 647-9600
glsubmissions@usmcins.com

Flooring Installers Coverage

USMC offers General Liability coverage for flooring installers. **Now Offering 2/4/4 limits!**

Eligible Exposures



Commercial Buildings

**Offices, Schools, Retail Stores,
Grocery Stores, Hotels/Hospitality Buildings**



Residential Buildings

**Private Residences, Apartments,
Co-ops and Condos**

Types of Flooring Installation: Hardwood, Tile, Carpet, Subcontractors, distributors with install & flooring GCs

✓ Coverage Offered

- General Liability coverage for flooring installers
- Available in all States across the USA (Except Alaska)
- Waiver of transfer or rights of recovery against others to us
- Primary and Non-contributory Language
- Various additional insured endorsements

✗ Ineligible Exposures

- Ask us if you have a strange one!

⚠ Limits

- 1/2/2 limits (1M occurrence, 2M general aggregate, 2M products and completed operations aggregate)
- 2/4/4 limits (2M occurrence, 4M general aggregate, 4M products and completed operations aggregate)
- 5M Per Project Aggregate
- 5M supported excess over 1/2/2 and 3M excess over 2/4/4

📄 Required for Submissions

- Completed Acord 125 & 126 application
- Completed Supplemental
- Five years of loss history (Resume is required if in business for three years or less)
- Safety manual
- Expiring program info – Limits, Premiums, DED/SIR, Etc.
- Subcontractors' agreement
- Workers comp mod

Flooring Installers Coverage Team

Andrew Dolan

Vice President of Underwriting
(215) 647-9600
andrew@usmcins.com

Andrew Curry

Underwriter – GL
(267) 454-0056
acurry@usmcins.com

Laura Kolb

GL Submissions Coordinator
(215) 647-9600
glsubmissions@usmcins.com

Debris Removal Coverage

USMC offers coverage for Debris Removal contractors. **Now Offering 2/4/4 limits!**

Eligible Exposures



Construction Site Debris Removal

✔ Coverage Offered

- General Liability coverage for Debris Removal contractors
- Available in all states across the USA (except Alaska)
- Waiver of transfer of right of recovery against others to us
- Primary and Non-Contributory Language
- Various Additional Insured Endorsement

✘ Ineligible Exposures

- Demolition

⚠ Limits

- 1/2/2 (1M occurrence, 2M general aggregate); 2M products and completed operations aggregate
- 2/4/4 limits (2M occurrence, 4M general aggregate, 4M products and completed operations aggregate)
- 5M Per Project Aggregate
- 5M Supported Excess over 1/2/2 and 3M excess over 2/4/4

📄 Required for Submissions

- Completed Acord 125 & 126 application
- Completed Supplemental
- Five Years of loss history (Resume required if in business for three years or less)
- Safety Manual
- Expiring program info—limits, premiums, DED/SIR, etc.
- Subcontractor's agreement
- Workers comp mod

Debris Removal Coverage Team

Andrew Dolan

Vice President of Underwriting
(215) 647-9600
andrew@usmcins.com

Drew Moyer

Underwriter – GL
(484) 801-4794
dmoyer@usmcins.com



DEMETER
SPECIALTY RISK LLC

USMC Underwriting Service
Management Co

USMC IS NOW OFFERING SUPPORTED EXCESS IN PARTNERSHIP WITH DEMETER!

GL Excess for USMC Accounts

- Non-Admitted - A Rated Carrier
- Follow Form Excess with MPs (Class Dependent)
Starting at \$25,000
- 5x1 Capacity (NEW)
- 3x2 Capacity
- Scheduled Auto Available
for Small Fleets
- All GL Classes Written
Through USMC
- 2-3 Day Turnaround
(in most cases)



Contact

TJ Yaglenski
tj@usmcins.com
215-392-0751

Andrew Dolan
andrew@usmcins.com
215-647-9600



POLICIES UNDER \$250,000 OFFER 10% DOWN PAYMENT

25 % MEP • 10 INSTALLMENTS

In House Premium Financing

For the finance agreement please send the following info:

1. Your quote cover with the total taxes/fees to be added.
2. The agent's information (company and address)
3. The insured's first and last name, phone number, and email address.

First Insurance sends an email **DIRECTLY to the insured. You will also receive a copy.

NOTE: Insured has 10 days to complete e-signature and pay the down payment, otherwise bind date cannot be guaranteed.



Contact
Linnea Blood
lblood@usmcins.com
267-744-4135



Specialized Property and Casualty Insurance Programs



Underwriting Service Management Co

Contact Info

(215) 647-9600
claims@usmcins.com
usmcinsurance.com



DEMETER
SPECIALTY RISK LLC

Contact Info

(215) 392-0776
info@demeterspecialty.com
demeterspecialty.com



PIPF

Contact Info

(267) 744-4135
lblood@usmcins.com
pipfinfo.com

